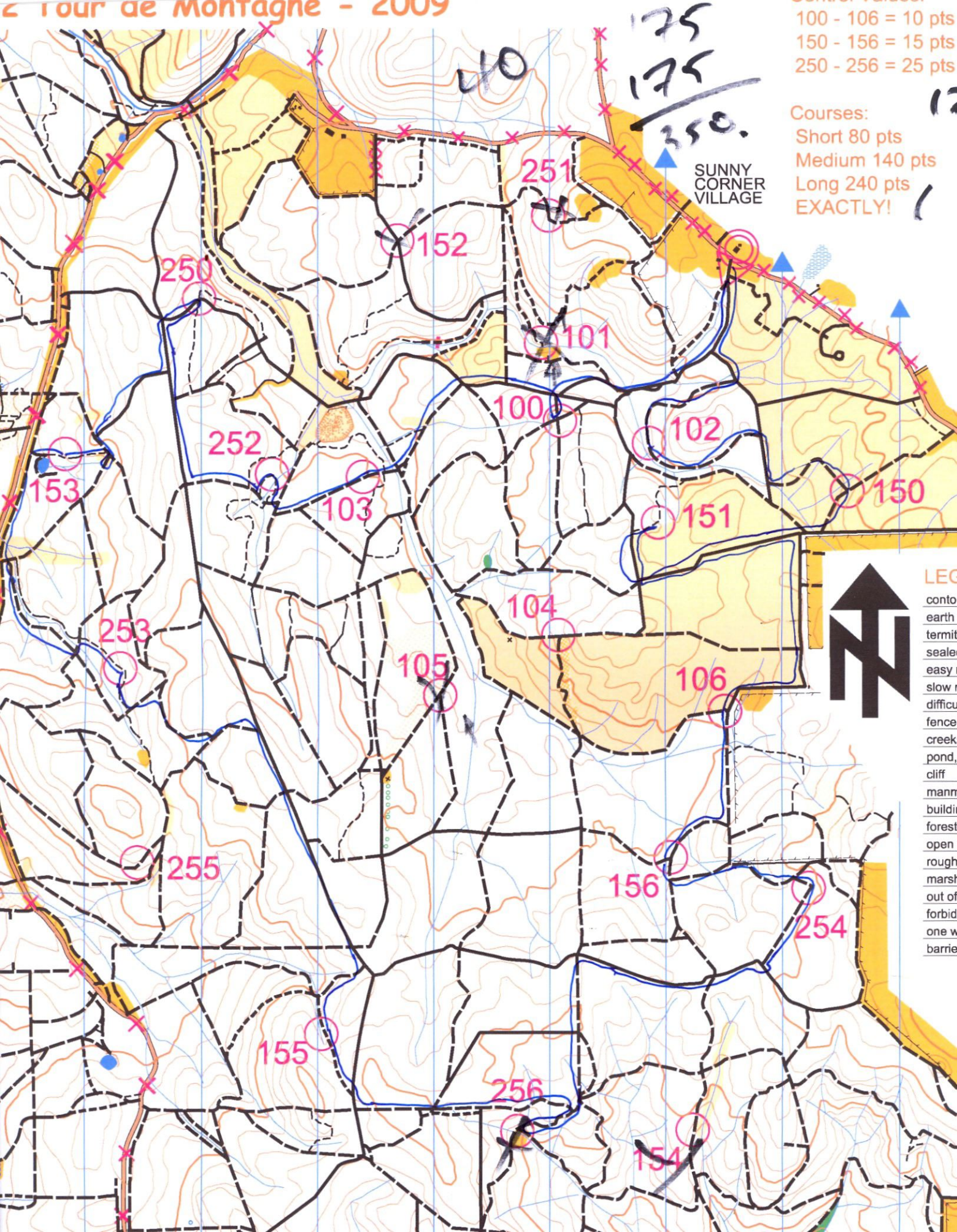


Le Tour de Montagne - 2009



100 - 106 = 10 pts
 150 - 156 = 15 pts
 250 - 256 = 25 pts

Courses:
 Short 80 pts
 Medium 140 pts
 Long 240 pts
EXACTLY!

175
 175

 350.

SUNNY CORNER VILLAGE



LEG
 conto
 earth
 termi
 seale
 easy
 slow
 diffic
 fence
 creek
 pond,
 cliff
 man
 buildi
 forest
 open
 rough
 marsh
 out of
 forbid
 one w
 barrie

251
 152
 101
 100
 102
 150
 153
 252
 103
 104
 105
 106
 253
 255
 155
 256
 154
 254